

⚠ Safety Warning

- It is strictly forbidden to install the product in the environment containing flammable and explosive gas and moisture condensation, and it is strictly prohibited to operate the product with wet hands.
- It is forbidden to touch the conductive parts of the product during the work.
- The installation, maintenance and maintenance of the product must be carried out by professional personnel to ensure that the line is powered off.
- Do not play with children or packaging.
- Sufficient space and safe distance should be reserved around the product installation.
- Do not install in gas medium can corrode metal and damage insulation.
- When the product is installed and used, the standard conductor must be used and the power supply and load meeting the requirements must be connected.
- In order to avoid dangerous accidents, the installation and fixation of products must be carried out in strict accordance with the requirements of the manual.
- After removing the package, check whether the product is damaged and check the integrity of the goods.
- When the product is used in outdoor, dust or humid environment, it should be installed in the distribution box with corresponding protection level.

1 Main use and scope of application

LMI series mechanical interlock is composed of two-stage (multi-stage) circuit breaker and interlock conversion accessories. It is mainly used in home life, business clubs, hotels, shopping malls and other occasions where two main circuits cannot work at the same time.

As a separate mechanism, mechanical interlock is assembled in the middle of two-stage (multi-stage) circuit breakers. When the common power circuit breaker is on and needs to change the line, manually disconnect the handle of the common circuit breaker, operate the mechanical interlock sliding cover to push the common circuit breaker, and then open the handle of the standby power supply circuit breaker to close it. Under the action of the interlock conversion accessory, the common power circuit breaker can ensure that the two lines will not be connected at the same time and switch the power supply safely at any time. It can protect the power line and electrical equipment or other mechanical and electrical equipment. Regardless of the primary and secondary, both circuit breakers can achieve the above operation.

2 Main technical parameters

The main parameters are shown in Table 1

Environment condition	Parameter	Value
Environment condition	Ambient temperature (°C)	35°C~+70°C
	Altitude (m)	The altitude of the installation site shall not exceed 3000m
	Humid and hot atmospheric conditions	The relative humidity is less than 50% at +40 °C and 90% at +20 °C
	class of pollution	Grade 2
Technical parameter	Installation category	Class II and III
	Pole number	3P
	Product width	88mm
Technical parameter	Mechanical interlock	Manual switching of dual power supply
	Assembly method	Between two or more stage circuit breakers (1P 2P 3P 4P)

3 Outline and installation dimensions

The outline and installation dimensions are shown in Fig. 1/2/3/4

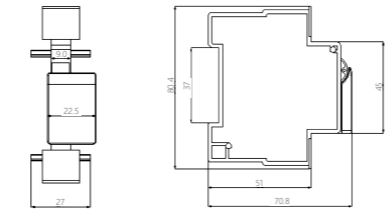


Figure 1 LMI-12 mechanical interlock appearance and installation dimension

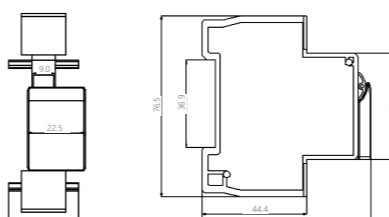


Figure 2 LMI-13 mechanical interlock appearance and installation dimension

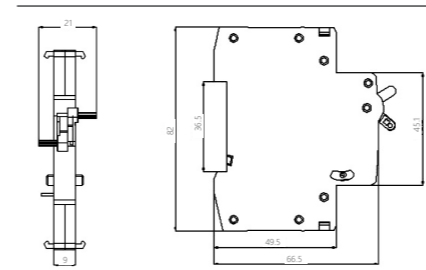


Figure 3 LMI-B1 mechanical interlock appearance and installation dimension

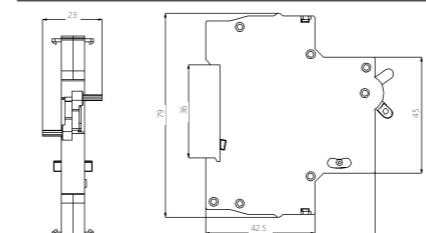


Figure 4 LMI-XB mechanical interlock appearance and installation dimension

The assembly method is shown in Figure 2

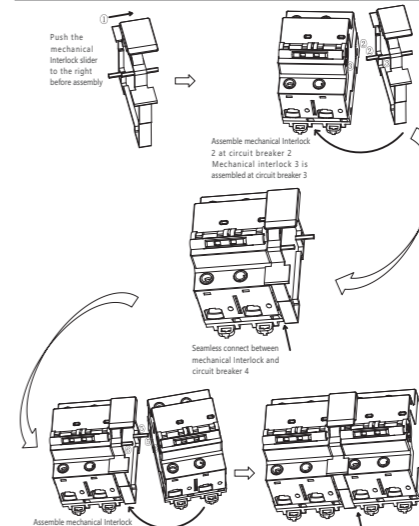


Figure 5 LMI-12 / 13 mechanical interlock assembly mode diagram

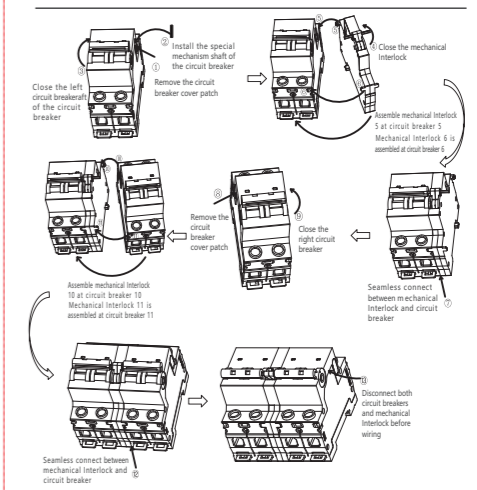


Figure 6 LMI-B1 / XB mechanical interlock assembly mode diagram

Installation, debugging and operation (refer to the following figure, chart or operation program diagram to simplify the installation, wiring, debugging and operation of the product)
Before installation, check whether the product mark is consistent with the conditions used;

Switch on the circuit breaker and mechanical interlock before LMI-XB / B1 assembly;
The left circuit breaker must be installed with factory equipped shaft before installation.

Note: mechanical interlock products shall be installed in parallel with miniature circuit breakers of the same specifications.

4 Fault analysis and troubleshooting

Fault phenomenon	Cause analysis	Elimination and preventive measures
Sliding cover stuck	The mechanical interlock sliding cover was removed by misoperation, and burr was produced after reassembly	Assembly in strict accordance with the above figure
Fracture of assembling fixed column	Transportation causes Not assembled according to the instructions	
Install the rear circuit breaker latch	The mechanical interlock shaft is skewed or the mechanism parts are damaged	
Circuit breaker closing at the same time	Left circuit breaker shaft not installed	

5 Warranty period, environmental protection and other legal provisions

5.1 Warranty period

Under the normal storage and transportation conditions, and the product package or product itself is in good condition, the warranty period is 24 months from the date of production.

The following conditions are not covered by the warranty:

- Damage caused by improper use, storage and maintenance of users.
- Damage caused by organization or personnel not assigned by the company, or self disassembly and repair.
- The product is beyond the warranty period.
- Damage caused by force majeure.

5.2 Environmental protection

In order to protect the environment, when the product or its components are scrapped, please properly treat it as industrial waste. Or by the recycling station in accordance with the relevant national regulations for classification, dismantling, recycling, etc.

6 Product selection and ordering instructions

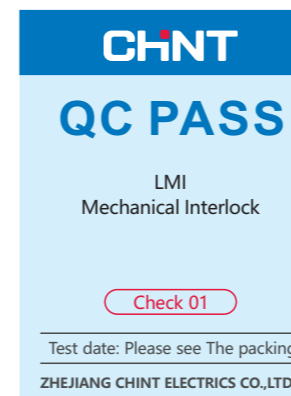
When ordering, the user must clearly state the name, model and order quantity of the product;

For example, the order quantity of LMI is 1000 sets;

Please write: LMI-12 mechanical interlock 1000 sets.

See Table 3 for the model and specification of the suitable circuit breaker

Serial number	Product model / specification	Model / specification of suitable circuit breaker
1	LMI-12 mechanical interlock	NXB-12S/DZ158-12S/CB-12S
2	LMI-13 mechanical interlock	EBO
3	LMI-XB mechanical interlock	NXB-63/NXB-63H
4	LMI-B1 mechanical interlock	NB1-63/NB1-63H/NB1Z-63/NB1-63DC/NB1G-63



LMI
Mechanical Interlock
User Instruction

Zhejiang Chint Electrics Co., Ltd.

Address: No. 1, CHINT Road, CHINT Industrial Zone, North Baixiang, Yueqing, Zhejiang 325603, P.R. China
E-mail: global-sales@chint.com
Website: http://en.chint.com



LMI
Mechanical Interlock
User Instruction

NO.2022.09