

# Better AMI Performance

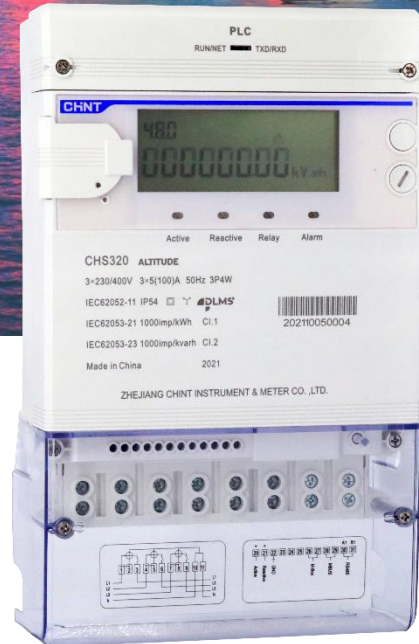
## CHS320

Three Phase Smart Meter

## ALTITUDE series

# CHINT

CHINT METER



- ⊙ DLMS/COSEM Protocol
- ⊙ Flexible Installation
- ⊙ Multiple Communication
- ⊙ Prepaid/Postpaid Mode Switch



HIGH ACCURACY



MULTI-COMMUNICATION



LARGE LCD DISPLAY



AMI

# CHNT

## CHINT METER

### CHS320

#### Three Phase Smart Meter

## SPECIFICATIONS

### Measurement

- Compliance with IEC and EN standard
- Connection type: 3P4W
- Accuracy: Class 1 for active, Class 2 for reactive

### Voltage

- Nominal voltage ( $U_n$ ):  $3 \times 220/380V \sim 3 \times 240/415V$
- Operating range:  $0.5U_n \sim 1.3U_n$
- Power consumption:  $\leq 2W, 10VA$

### Current

- $I_b$ : 5/10A
- $I_{max}$ : 80/100A

### Frequency

- 50Hz or 60Hz

### Real-time Clock

- Accuracy within 0.5 seconds per day at 23°C

### LCD Display

- 8 characters of 7 segment display with backlight
- Digital size: 7.5mm  $\times$  15mm
- LCD display available without main power

### Battery (Optional)

- Battery easy replaced
- Voltage: 3.6V
- Backup time: 10 years with power

### Measured Values

- Import/Export/Absolute/Algebraic kWh
- Import/Export/ kvarh
- Instantaneous kW, kvar, kVA, Irms, Vrms, Frequency, Power factor

### Maximum Demand

- Maximum demand: kW, kvar
- Intervals programmable from 5 to 60 minutes

### Time of Use

- Up to 4 rates
- Up to 4 seasons each year
- Up to 4 week table
- Up to 8 day table
- Up to 8 Time intervals per day

### Relay (Optional)

- Relay for phase line and neutral line

### Event Logs

- Tampering detection, power quality and general events
- Configurable event alarming system

### Load Profile

- Up to 4 channels
- Over 4800 records per channel

### Communications

- Sealable optical port & RS485 port
- Uplink: Replaceable G3-PLC/GPRS/4G/Wi-SUN module
- Downlink: Mbus/RF
- Protocol: DLMS/COSEM

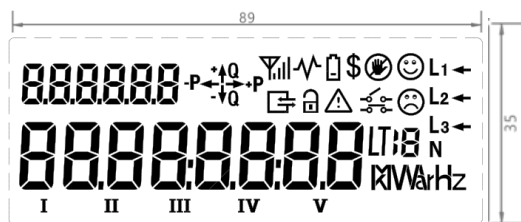
### Environmental

- Operating range limit: -40°C to +70°C
- Storage range limit: -40°C to +80°C
- Relative humidity:  $\leq 95\%$  RH
- Ingress protection: IP54

### Dimensions and Weight

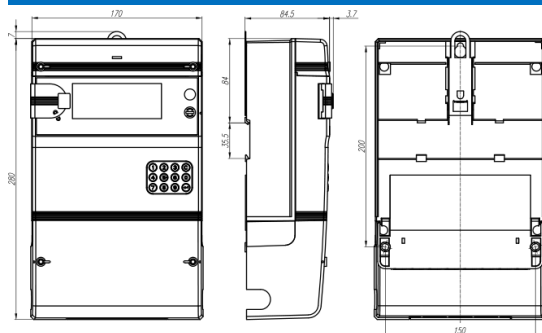
- Dimensions: 280mm  $\times$  170mm  $\times$  84.5mm
- Weight: 1.8 kg (Approx.)

## LCD INDICATION



Units: mm

## METER DIMENSIONS



Units: mm

Zhejiang Chint Instrument & Meter Co., Ltd

Add: No.560, Yueming Road, Binjiang District, Hangzhou, Zhejiang, China P.C: 310052 Tel: +86-571-56977777

Fax: +86-577-62919588 E-mail: chintmeter@chint.com

Website: <http://en.chintim.com/>

\*All rights reserved. Specification and technical data are subject to change without notice. Please contact us to confirm relevant information on ordering.

