

Better AMI Performance

CHS320

Three Phase Smart Meter

ALTITUDE series

CHINT

CHINT METER



- ⊙ DLMS/COSEM Protocol
- ⊙ Flexible Installation
- ⊙ Multiple Communication
- ⊙ Prepaid/Postpaid Mode Switch



HIGH ACCURACY



MULTI-COMMUNICATION



LARGE LCD DISPLAY



AMI

CHNT

CHINT METER

CHS320

Three Phase Smart Meter

SPECIFICATIONS

Measurement

- Compliance with IEC and EN standard
- Connection type: 3P3W, 3P4W
- Accuracy: Class 1/0.5S for active, Class 2 for reactive

Voltage

- Nominal voltage (U_n):
 - Direct connection $3 \times 220/380V \sim 3 \times 240/415V$
 - PT connection $3 \times 57.7/100V$
- Operating range: $0.5U_n \sim 1.3U_n$
- Power consumption: $\leq 2W, 10VA$

Current

- I_b : 5/10A
- I_{max} : 80/100A

Frequency

- 50Hz or 60Hz

Real-time Clock

- Accuracy within 0.5 seconds per day at 23°C

LCD Display

- 8 characters of 7 segment display with backlight
- Digital size: 7.5mm \times 15mm
- LCD display available without main power

Battery (Optional)

- Battery easy replaced
- Voltage: 3.6V
- Backup time: 10 years with power

Measured Values

- Import/Export/Absolute/Algebraic kWh
- Import/Export/ kvarh
- Instantaneous kW, kvar, kVA, Irms, Vrms, Frequency, Power factor

Maximum Demand

- Maximum demand: kW, kvar
- Block or rolling demand
- Intervals programmable from 5 to 60 minutes

Time of Use

- Up to 4 rates
- Up to 4 seasons each year
- Up to 4 week table
- Up to 8 day table
- Up to 8 Time intervals per day

Relay (Optional)

- Relay for phase line and neutral line

Event Logs

- Tampering detection, power quality and general events
- Configurable event alarming system

Load Profile

- Up to 4 channels
- Over 4800 records per channel

Communications

- Sealable optical port & RS485 port
- Uplink: Replaceable G3-PLC/GPRS/4G/Wi-SUN module
- Downlink: Mbus/RF
- Protocol: DLMS/COSEM

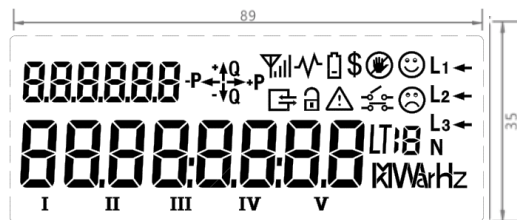
Environmental

- Operating range limit: -40°C to +70°C
- Storage range limit: -40°C to +80°C
- Relative humidity: $\leq 95\%$ RH
- Ingress protection: IP54

Dimensions and Weight

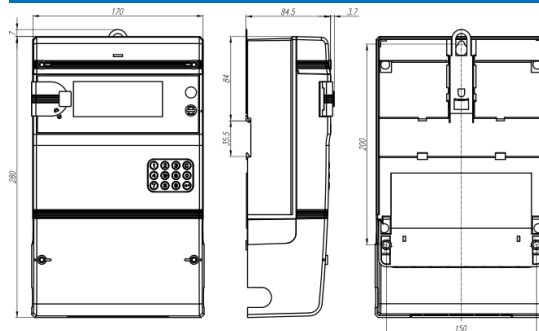
- Dimensions: 280mm \times 170mm \times 84.5mm
- Weight: 1.8 kg (Approx.)

LCD INDICATION



Units: mm

METER DIMENSIONS



Units: mm

Zhejiang Chint Instrument & Meter Co., Ltd

Add: No.560, Yueming Road, Binjiang District, Hangzhou, Zhejiang, China P.C: 310052 Tel: +86-571-56977777

Fax: +86-577-62919588 E-mail: chintmeter@chint.com

Website: <http://en.chintim.com/>

*All rights reserved. Specification and technical data are subject to change without notice. Please contact us to confirm relevant information on ordering.

