

Better AMI Performance

CHS120

Single Phase Smart Meter

ALTITUDE series

CHINT

CHINT METER



- DLMS/COSEM Protocol
- Flexible Installation
- Multiple Communication
- Prepaid/Postpaid Mode Switch



HIGH ACCURACY



MULTI-COMMUNICATION



LARGE LCD DISPLAY



AMI

CHS120

Single Phase Smart Meter

SPECIFICATIONS

Measurement

- Compliance with IEC and EN standard
- Connection type 1P2W
- Accuracy: Class 1.0 for active, Class 2.0 for reactive

Voltage

- Nominal voltage (Un): 220V, 230V, 240V
- Operating range: 0.5Un ~ 1.3Un
- Power consumption: ≤2W, 10VA

Current

- I_b: 5/10A
- I_{max}: 60/80/100A

Frequency

- 50Hz or 60Hz

Real-time Clock

- Accuracy within 0.5 seconds per day at 23°C

LCD Display

- 8 characters of 7 segment display
- Digital size: 5mm × 10mm
- LCD display available without main power

Battery (Optional)

- Battery easy replaced
- Voltage: 3.6V
- Backup time: 10 years with power

Measured Values

- Import/Export/Absolute/Algebraic kWh
- Import/Export/ kvarh
- Instantaneous kW, kvar, kVA, Irms, Vrms, Frequency, Power factor

Maximum Demand

- Maximum demand: kW, kvar
- Intervals programmable from 5 to 60 minutes

Time of Use

- Up to 4 rates
- Up to 4 seasons each year
- Up to 4 week table
- Up to 8 day table
- Up to 8 Time intervals per day

Relay (Optional)

- Relay for phase line and neutral line

Event Logs

- Tampering detection, power quality and general events
- Configurable event alarming system

Load Profile

- Up to 4 channels
- Over 4800 records per channel

Communications

- Sealable optical port / RS485 port: 9600bps
- Uplink: Replaceable G3-PLC/GPRS/4G/Wi-SUN module
- Downlink: Mbus/RF
- Protocol: DLMS/COSEM

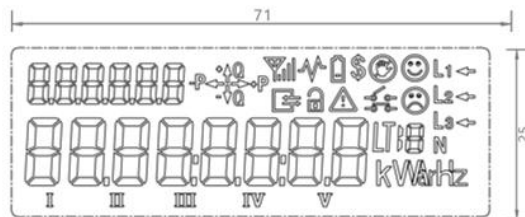
Environmental

- Operating range limit: -40° C to +75° C
- Storage range limit: -40° C to +85° C
- Relative humidity: ≤ 95%RH
- Ingress protection: IP54

Dimensions and Weight

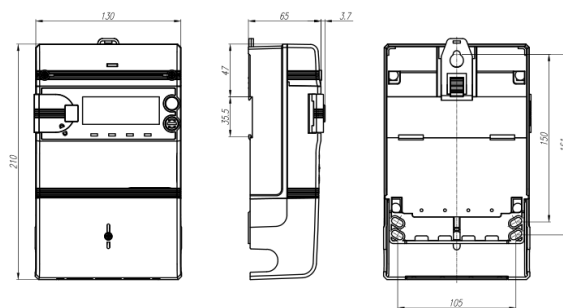
- Dimensions: 210mm × 130mm × 65mm
- Weight: 0.7 kg (Approx.)

LCD INDICATION



Units: mm

METER DIMENSIONS



Units: mm

Zhejiang Chint Instrument & Meter Co., Ltd

Add: No.560, Yueming Road, Binjiang District, Hangzhou, Zhejiang, China P.C: 310052 Tel: +86-571-56977777

Fax: +86-577-62919588 E-mail: chintmeter@chint.com

Website: <http://en.chintim.com/>

*All rights reserved. Specification and technical data are subject to change without notice. Please contact us to confirm relevant information on ordering.

