

# Smart Payment Performance

## CHD130

Single Phase DIN-Rail Meter

## ELITE series

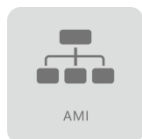
# CHNT

Empower the World

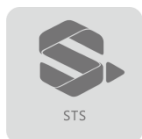
Instrument & Meter



- © Post-paid and Pre-paid Configurable
- © Compact Structure Design
- © Ultra Anti-Tamper



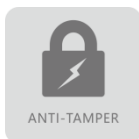
AMI



STS



DLMS



ANTI-TAMPER

# CHNT

Empower the World

## Instrument & Meter

# CHD130

### Single Phase DIN-Rail Meter

## SPECIFICATIONS

### Measurement

- ⊙ Compliance with DLMS/COSEM, IEC, STS standard
- ⊙ Element: 1 phase 2 wire / 1 phase 3 wire
- ⊙ Accuracy: Class 1.0/0.5 for active

### Voltage

- ⊙ Nominal voltage (Un): 110V, 120V, 220V, 230V, 240V
- ⊙ Operating range: 0.4Un-1.2Un
- ⊙ Power consumption: Voltage circuit ≤ 1W, 5VA  
Current circuit ≤ 2VA

### Current

- ⊙ 5(60)A/5(80)A/5(100)A

### Frequency

- ⊙ 50Hz or 60Hz

### Real-time Clock

- ⊙ Accuracy within 0.5 seconds per day at 23°C

### LED Display

- ⊙ Energy impulse output
- ⊙ Alarm indication include tampering and relay state
- ⊙ Energy reverse for postpaid mode  
Balance for prepaid mode

### Battery (Optional)

- ⊙ Built-in battery
- ⊙ Voltage: 3.6V nominal
- ⊙ Backup time: 10 years with power

### Measured Values

- ⊙ Total kWh
- ⊙ Instantaneous kW, Irms, Vrms
- ⊙ Cumulative and credit energy

### Relay

- ⊙ Internal relay
- ⊙ One or Two relays / 100A
- ⊙ Relay will disconnected when meter tamper, overload, credit not enough

### Communications

- ⊙ Optical port: IEC62056-21 compliant
- ⊙ RS485 / M-Bus / PLC / RF / Bluetooth (optional) module integrated
- ⊙ DLMS/COSEM communication protocol compliant
- ⊙ Communication with CIU and DCU supported

### Event Logs (Optional)

- ⊙ Standard event, tamper event, control event, grid event
- ⊙ Configurable event alarming system (LED and buzzer)
- ⊙ Meter tamper state indication on CIU LCD and LED

### Security

- ⊙ Compatibility STS
- ⊙ 20 digits token transfer into meter through keypad or remote communication.

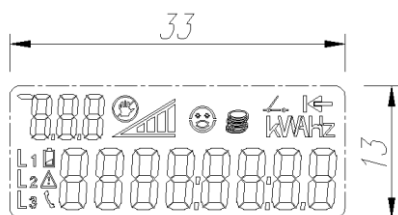
### Environmental

- ⊙ Operating range limit: -40°C to +75°C
- ⊙ Storage range limit: -40°C to +85°C
- ⊙ Relative humidity: ≤ 95%RH
- ⊙ Ingress protection: IP54

### Dimensions and Weight

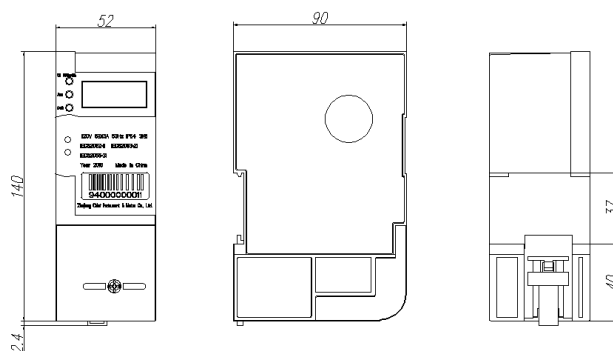
- ⊙ Dimensions: 140mm×90mm×52mm
- ⊙ Weight: 0.6 kg (Approx.)

## LCD INDICATION



Units: mm

## METER DIMENSIONS



Units: mm

Zhejiang Chint Instrument & Meter Co., Ltd

Add: No.560, Yueming Road, Binjiang District, Hangzhou, Zhejiang, China P.C: 310052 Tel: +86-571-56977777

Fax: +86-577-62919588 E-mail: chintmeter@chint.com

Website: <http://en.chintim.com/>

\*All rights reserved. Specification and technical data are subject to change without notice. Please contact us to confirm relevant information on ordering.

